



Zayn and Zoey visited Svalbard Island in Norway with their Dad for an upcoming marathon. When they landed in Norway, they met Mr. Leo, their guide. Mr. Leo took them for a tour to see many polar animals and trees of the Polar Region. Mr. Leo also told them wonderful facts regarding the climate and animals there.

Let's Chat!

You have read so many interesting things about the polar region. Let's see how much of it you remember.

- What is the book, Zayn and Zoey Explore the Polar Region, about?
- Why are no tall trees found in the polar region?
- What is your favourite polar animal?
- Why do polar animals have thick skin and fur?
- For how long does the polar region get sunlight?
- Have you heard of an igloo? Do you know what it is made of?

HANDS ON FUN!

Here are some fun activities related to the polar region to do with children.



Fork Painting

Polar bear is one of the mightiest animals in the polar region!
Let's make one today.

Things you need:

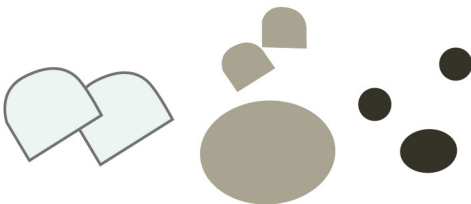
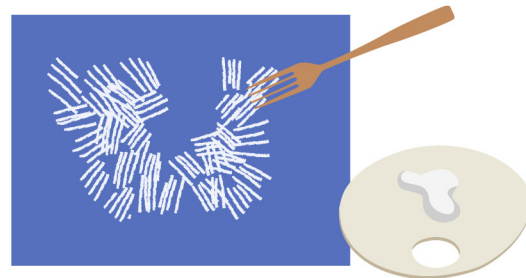
- Blue craft sheet
- White paint
- Fork
- Paint palette
- White, grey, black craft paper
- Black marker
- Scissors
- Glue

Steps to follow:



1. Take out some white paint in the palette.

2. Dip the back of the fork in the paint and print it on the blue craft sheet. Cover almost all of it in a circular pattern as shown in the picture.



3. Cut out eyes, nose, ear shapes from black, grey, and white papers, and stick them.

4. Your polar bear is ready!





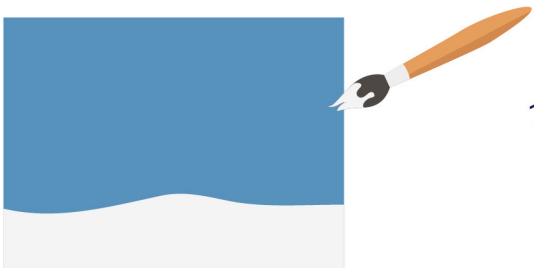
Shape Craft

In the polar region, Eskimos live in a house made of snow and ice. The air pockets between the ice blocks lock the air and keep the inside warm. It would be wonderful to live in one! How about we make one?

Things you need:

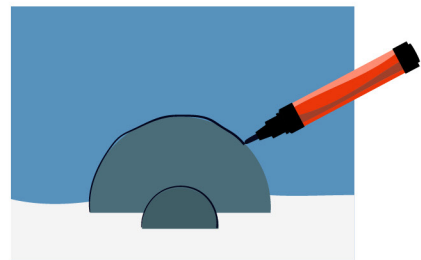
- Blue art sheet
- Scissors
- Glue
- Black marker
- White paint
- White paper (cut into small rectangle shapes for snow blocks.)

Steps to follow:



1. Paint the bottom band of the blue art sheet with white paint.

2. Once the paint dries, draw two semi-circles, bigger for igloo and smaller for its entrance.



3. Stick white rectangle cut-outs as ice blocks.

4. Use black marker to make the door and finger paint snowflakes with white paint.



Your cosy igloo is ready!

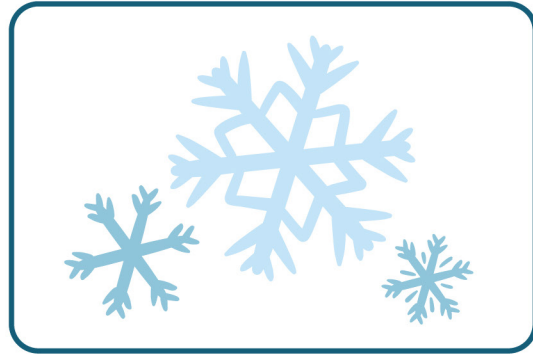
Circle the Bigger

Here are a few things related to the polar region. All come in different sizes. Can you identify and circle the bigger thing in each set?

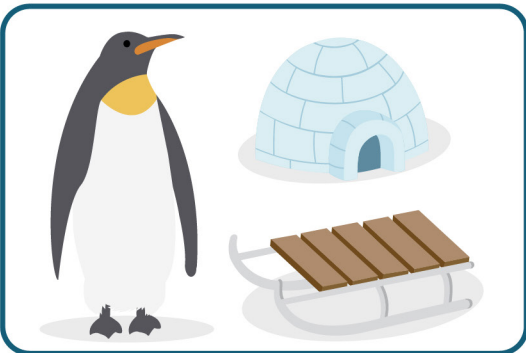
1.



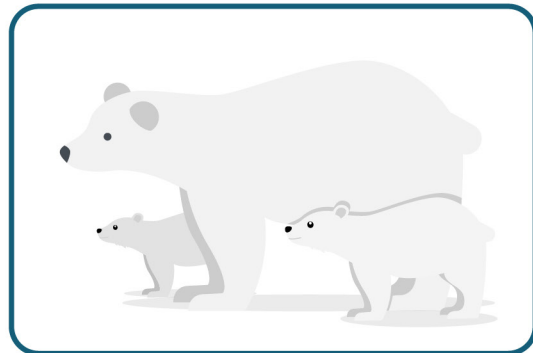
5.



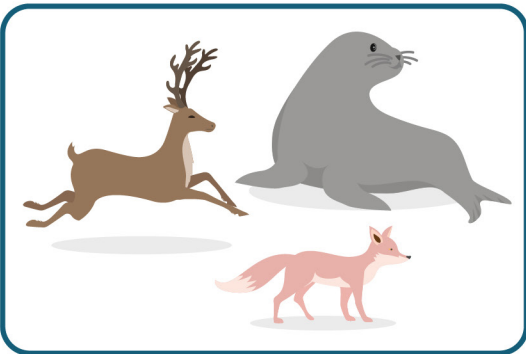
2.



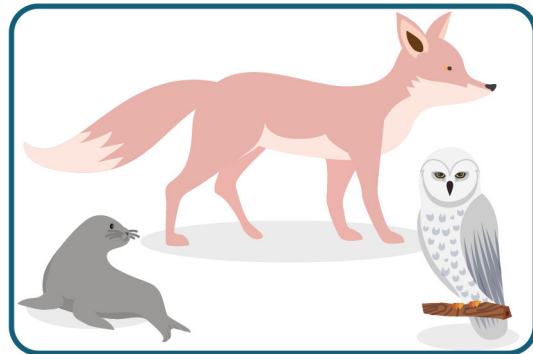
6.



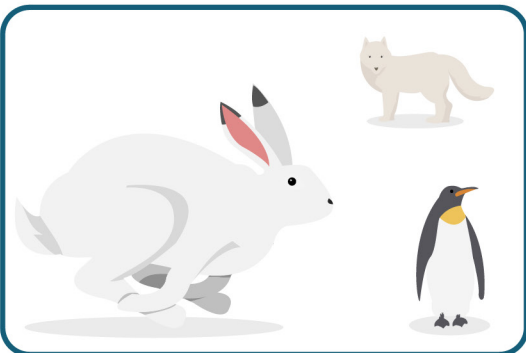
3.



7.



4.



8.



Complete the Picture

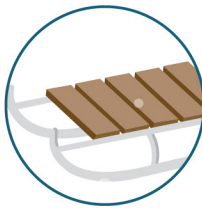
A lovely scene in the polar region is missing a few pieces. Can you figure out which one of the pieces given below will complete the scene?



a.



b.



c.



d.



e.



f.



g.



h.